

Nuevos Módulos Premium

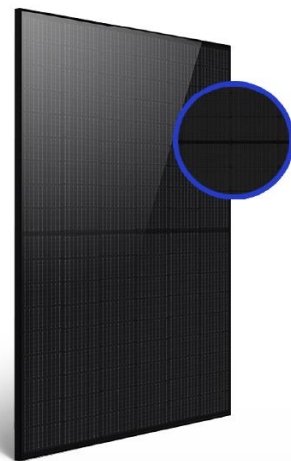
JASolar JAM 54S31 410/GR

Diseño y estética avanzada

El color negro del módulo da como resultado un **efecto All Black** permitiendo así mantener la estética de cada vivienda.

Gracias a su color oscuro pasan casi desapercibidos en los tejados de los inmuebles.

Es **perfecto para dar un valor extra** a las casas de nuestros clientes.



Garantía de producto

Los nuevos paneles Premium cuentan **12 años de garantía de producto y 25 años de garantía de producción.**

Durante el primer año de funcionamiento del módulo, este, tan solo tiene una **degradación de potencia inferior al 2%.**

Desde el segundo año de funcionamiento hasta el año 25, su **degradación es tan solo del 0.55% por año.**



El mayor rendimiento y fiabilidad

Estos paneles solares Premium cuentan con tecnología avanzada **Deep Blue 3.0 PRO** ofreciendo al módulo **una eficiencia superior y un gran rendimiento de generación de energía.**

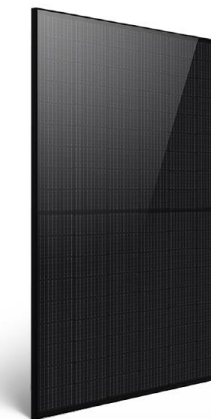
Cuentan con una **soldadura uniforme compacta de alta densidad** que es capaz de ampliar la eficiencia del panel y de aumentar la capacidad para generar energía tanto en viviendas unifamiliares como en negocios.



Paneles resistentes al clima

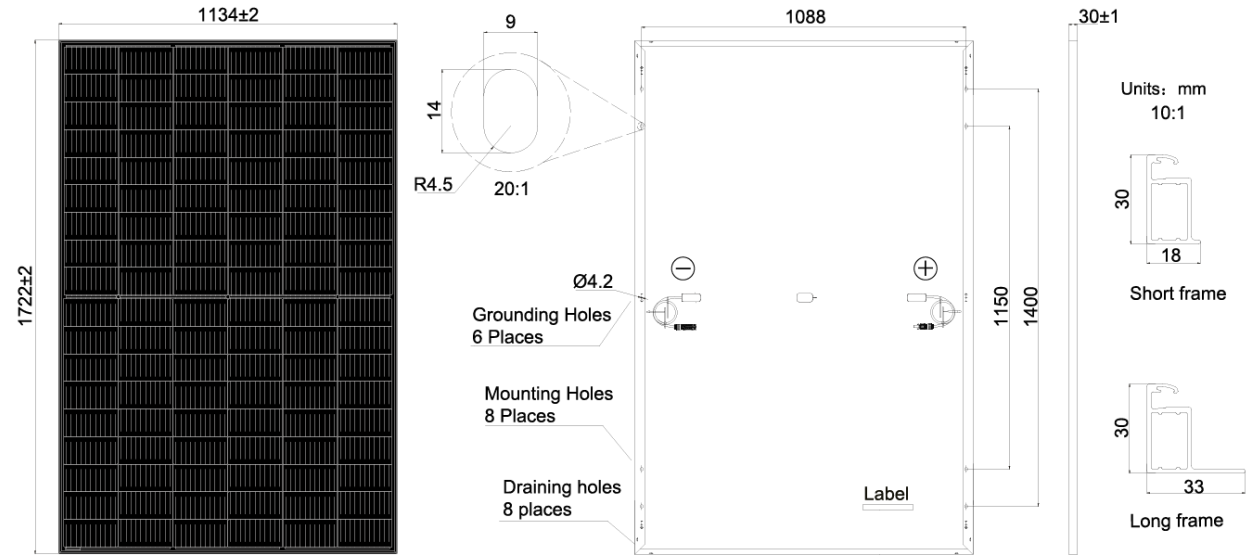
Los paneles Premium están **compuestos de un material de alta calidad** que les permite tener gran resistencia a las microfisuras.

Su estructura soporta grandes cargas de presión además de condiciones climáticas adversas incluso de nieve o granizo.



410 Wp **108** Células

19 Kg **12** Años de garantía



Condiciones eléctricas

TYPE	JAM54S31 -410/GR
Rated Maximum Power(Pmax) [W]	410
Open Circuit Voltage(Voc) [V]	37.32
Maximum Power Voltage(Vmp) [V]	31.45
Short Circuit Current(Isc) [A]	13.95
Maximum Power Current(Imp) [A]	13.04
Module Efficiency [%]	21.0
Power Tolerance	0~+5W
Temperature Coefficient of Isc(α_{Isc})	+0.045%/°C
Temperature Coefficient of Voc(β_{Voc})	-0.275%/°C
Temperature Coefficient of Pmax(γ_{Pmp})	-0.350%/°C
STC	Irradiance 1000W/m ² , cell temperature 25°C, AM1.5G

Especificaciones

Cell	Mono
Weight	19.5kg
Dimensions	1722±2mm×1134±2mm×30±1mm
Cable Cross Section Size	4mm ² (IEC) , 12 AWG(UL)
No. of cells	108(6x18)
Junction Box	IP68, 3 diodes
Connector	MC4-EVO2/ QC 4.10-35
Cable Length (Including Connector)	Portrait: 200mm(+)/300mm(-); 800mm(+)/800mm(-)(Leapfrog) Landscape: 1100mm(+)/1100mm(-)
Front Glass	2.8mm
Packaging Configuration	36pcs/Pallet 936pcs/40HQ Container

Harvest the Sunshine



Mono

420W MBB Half-cell Module
JAM54S31 395-420/GR Series

Introduction

Assembled with 11BB PERC cells and gapless ribbon connection technology, the modules can offer higher output power with improved module efficiency, the reduction of cells gaps brings outstanding module appearance. The half-cell configuration makes less shading effect, lower risk of hot spot, as well as more reliable and stable power generation.



Higher output power



Lower LCOE



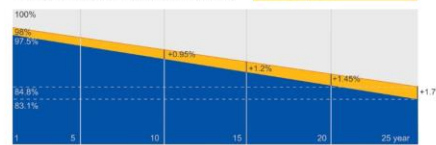
Less shading and lower resistive loss



Better mechanical loading tolerance

Superior Warranty

- 12-year product warranty
- 25-year linear power output warranty



■ New linear power warranty ■ Standard module linear power warranty

Comprehensive Certificates

- IEC 61215, IEC 61730, UL 61215, UL 61730
- ISO 9001: 2015 Quality management systems
- ISO 14001: 2015 Environmental management systems
- ISO 45001: 2018 Occupational health and safety management systems
- IEC 62941: 2019 Terrestrial photovoltaic (PV) modules - Quality system for PV module manufacturing



JASOLAR

www.jasolar.com

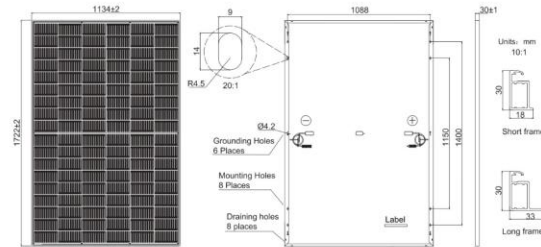
Specifications subject to technical changes and tests. JA Solar reserves the right of final interpretation.



JASOLAR

JAM54S31 395-420/GR Series

MECHANICAL DIAGRAMS



Remark: customized frame color and cable length available upon request

SPECIFICATIONS

Cell	Mono
Weight	19.5kg
Dimensions	1722±2mm×1134±2mm×30±1mm
Cable Cross Section Size	4mm ² (IEC) , 12 AWG(UL)
No. of cells	108(6x18)
Junction Box	IP68, 3 diodes
Connector	MC4-EVO2/ QC 4.10-35
Cable Length (Including Connector)	Portrait: 200mm(+)/300mm(-) 800mm(+)/800mm(-) (Leapfrog) Landscape: 1100mm(+)/1100mm(-)
Front Glass	2.8mm
Packaging Configuration	36pcs/Pallet 936pcs/40HQ Container

ELECTRICAL PARAMETERS AT STC

TYPE	JAM54S31 -395/GR	JAM54S31 -400/GR	JAM54S31 -405/GR	JAM54S31 -410/GR	JAM54S31 -415/GR	JAM54S31 -420/GR
Rated Maximum Power(P _{max}) [W]	395	400	405	410	415	420
Open Circuit Voltage(V _{oc}) [V]	36.98	37.07	37.23	37.32	37.45	37.58
Maximum Power Voltage(V _{mp}) [V]	30.84	31.01	31.21	31.45	31.61	31.80
Short Circuit Current(I _{sc}) [A]	13.70	13.79	13.87	13.95	14.02	14.10
Maximum Power Current(I _{mp}) [A]	12.81	12.90	12.98	13.04	13.13	13.21
Module Efficiency [%]	20.2	20.5	20.7	21.0	21.3	21.5
Power Tolerance	0~+5W					
Temperature Coefficient of I _{sc} (α _{Isc})	+0.045%/°C					
Temperature Coefficient of V _{oc} (β _{Voc})	-0.275%/°C					
Temperature Coefficient of P _{max} (γ _{Pmp})	-0.350%/°C					
STC	Irradiance 1000W/m ² , cell temperature 25°C, AM1.5G					

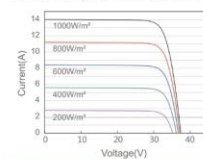
Remark: Electrical data in this catalog do not refer to a single module and they are not part of the offer. They only serve for comparison among different module types.

ELECTRICAL PARAMETERS AT NOCT

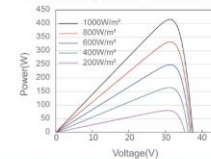
TYPE	JAM54S31 -395/GR	JAM54S31 -400/GR	JAM54S31 -405/GR	JAM54S31 -410/GR	JAM54S31 -415/GR	JAM54S31 -420/GR	OPERATING CONDITIONS
Rated Max Power(P _{max}) [W]	298	302	306	310	314	318	Maximum System Voltage 1000V/1500V DC
Open Circuit Voltage(V _{oc}) [V]	34.75	34.88	35.12	35.23	35.37	35.50	Operating Temperature -40°C ~+85°C
Max Power Voltage(V _{mp}) [V]	29.08	29.26	29.47	29.72	29.89	30.09	Maximum Series Fuse Rating 25A
Short Circuit Current(I _{sc}) [A]	10.96	11.03	11.10	11.16	11.22	11.29	Maximum Static Load Front 5400Pa(112lb/ft ²) Maximum Static Load Back 2400Pa(50lb/ft ²)
Max Power Current(I _{mp}) [A]	10.25	10.32	10.38	10.43	10.50	10.57	NOCT 45±2°C
NOCT	Irradiance 800W/m ² , ambient temperature 20°C, wind speed 1m/s, AM1.5G						Safety Class Class II
							Fire Performance UL Type 1

CHARACTERISTICS

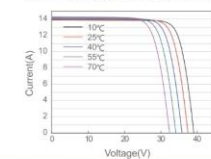
Current-Voltage Curve JAM54S31-415/GR



Power-Voltage Curve JAM54S31-415/GR



Current-Voltage Curve JAM54S31-415/GR



Premium Cells, Premium Modules

Version No.: Global_EN_20221122A